



NEWS FOR IMMEDIATE RELEASE, Thursday, February 1, 2001
 Contact: Scan Wizard, John A. Sarkett, 847.446.2222, jas@option-wizard.com
 Contact: ATFI, Stuart Kalman, 312.939.5594, stuart@atfi.com
<http://option-wizard.com/scanwizard> <http://www.atfi.com>

Scan Wizard Creates Free Adware Version; Includes Real Time Ability, Enhancements

CHICAGO -- Scan Wizard™ offers a new free, ad-supported version by registering at its web site: <http://option-wizard.com/scanwizard/>.

Scan Wizard free adware version limits ticker list to 30 stocks, purchase versions scan unlimited lists. Otherwise, functionality is the same.

Major enhancements to Scan Wizard in this and purchase versions include:

TRADING MODEL RESULTS are now quantified for every stock. For example, here are the results among the S&P 500 stocks for the two trading models on board, Force Index and Triple Filter:

| TRADING MODEL | BEST PERFORMING STOCKS SP 500 | W/L [points won/ points lost] | WORST PERFORMING STOCKS SP 500 | W/L [points won/ points lost] |
|---------------|-------------------------------|-------------------------------|--------------------------------|-------------------------------|
| FORCE INDEX | HM | 7.25:1 | MCO | .514:1 |
| TRIPLE FILTER | CNC | 16.11:1 | CTB | .106:1 |

During the last 200 days, Homestake Mining made 7.25 points for every 1.00 points lost

following the Force Index Model. Even better, Consecro made 16.11 points for every 1.00 points lost following the Triple Filter Model. On the worst case side, Moody's made only .514 for every 1.00 lost following the Force Index Model -- a losing proposition. Worse still, Cooper Tire made .106 points for every 1.00 points lost following the Triple Filter Model, again a losing proposition. This kind of quantitative metric would either add to or subtract from the confidence a trader has in any given signal on any given stock. The signals can also be "faded", i.e. traded against, e.g. if the model said go long CTB, a trader could go short with a 10:1 track record behind him. Stocks can be ranked accordingly:

SORT LIST capability to see which stocks conform best to Force Index, Triple Filter models. This feature measures the effectiveness of the buy-sell signals generated for a given stock.

PREFERENCES. Custom smoothings capability for volume/average volume, and fast and slow values for Force Index, moving averages and historical volatilities.

REAL TIME CAPABILITY from AT Financial, which offers a two week trial, \$50, (<http://www.atfi.com>).

TREND. If current price > 20DMA > 35DMA > 50DMA = uptrend, and reverse = downtrend. Illustrates how few or how many stocks are actually trending at any given time. [DMA stands for days moving average.]

HISTORICAL VOLATILITIES. Fast and slow, 6DMA and 100DMA, to help identify basing-breakout formations. Some analysts believe that when the 6 day historical volatility is below the 100 day historical volatility, a breakout, up or down, is imminent.

VOLUME SPIKE. Volume/20DMA average volume, to highlight unusual activity.

EXPORT DATA to text.

PRINT CHART

INSTALLSHIELD .exe is new.

All features detailed: <http://option-wizard.com/scanwizard/>.

Background

Scan Wizard ATF Real Time Version updates a list of the S & P 500 stocks, and generates buy-sell signals, in less than 20 seconds on a 400 mHz computer, says developer John A. Sarkett. Additionally, the AT Attitude subscription offers advanced fundamental and technical analysis features.

Introduced in October, 2000, Scan Wizard™ stock market software scans lists of stock ticker symbols for breakout trend change.

Scan Wizard:

- **Generates buy-sell signals** based on price, volume, trend and momentum
- **Logs a track record** for all buy-sell signals for each and every ticker symbol.
- **Charts** (candles, Force Index and stochastics)
- **Accesses news** (from Yahoo) on any ticker symbol.

An Internet product from conception to completion, Scan Wizard does not require the client to have a stock data file on the hard drive; it accesses historical data for any stock directly from the Internet. This means the client can analyze any stock instantly.

Scan Wizard comes with lists of the Dow Jones 30, Internet 100 and S&P 500; clients may customize and create their own lists as well. Scan Wizard uses free stock historical data from the Internet; there is no data fee.

Two sets of buy-sell signals are generated:

- **Force Index** -- (developed by Dr. Alexander Elder), a price-volume indicator. When 20-day Force Index changes from negative to positive a buy signal is generated; conversely, when 20-day Force Index changes from positive to negative, a sell signal is generated.
- **Triple Filter** -- which more restrictively adds conditions to the basic Force Index buy or sell signal and so prevents buying overbought or downtrending stocks (and the reverse for short sales).

A permanent Scan Wizard license is available for \$995. Alternately, Scan Wizard may also

be received by monthly subscription for \$99.95. The adware version is free.

Details, manual, screenshots, and free version at <http://option-wizard.com/scanwizard/>.

Scan Wizard is the third of three financial software products offered by Sarkett & Associates, Inc. It joins Option Wizard™ Online, comprehensive options analytics, and Backtest Wizard™, buy-sell technical analysis, both in Microsoft Excel® format. Introduced on the web in August, 1995, and popular choice with money managers around the world, Option Wizard is a past Reader's Choice award winner from *Technical Analysis of Stocks and Commodities* magazine.

ATFI background

A-T Attitude for the Internet brings the fully functional professional trading system to investors needing real-time market data, news, and analysis on a wide range of financial instruments. A-T Attitude for the Internet was developed to address the needs of the professional investor who is frustrated by the slowness of Web browser-based quote systems currently available via the Internet. A-T Attitude software uses a modem and Internet connection to communicate directly with a quote/data server located at the A-T Financial operations center. The server broadcasts real-time quote data directly to the user's PC and responds instantly to user requests for data.

All data is continually and dynamically updated at the user site. This direct delivery eliminates the sluggish response time typically encountered through the use of browser-based quote-terminal software – the user simply connects directly to a data center via the Internet. As well, the quote system can be used simultaneously with other Web tools, such as a browser, via a single Internet connection.

Interested investors can receive more information, including product trial information, about A-T Attitude for the Internet by calling 1-888-REACH-AT (1-888-732-2428), or visiting the A-T Financial World Wide Web site at <http://www.atfi.com>.

A-T Financial Information, Inc. has been the leader in developing and delivering Microsoft Windows technology to Wall Street since 1987. ATFI scaleable solutions provide investment professionals throughout the financial community with unique, cost-effective approaches for integrating major market data feeds through PC applications, and meeting the real-time data needs of both institutional and retail clients.'

Conducent background

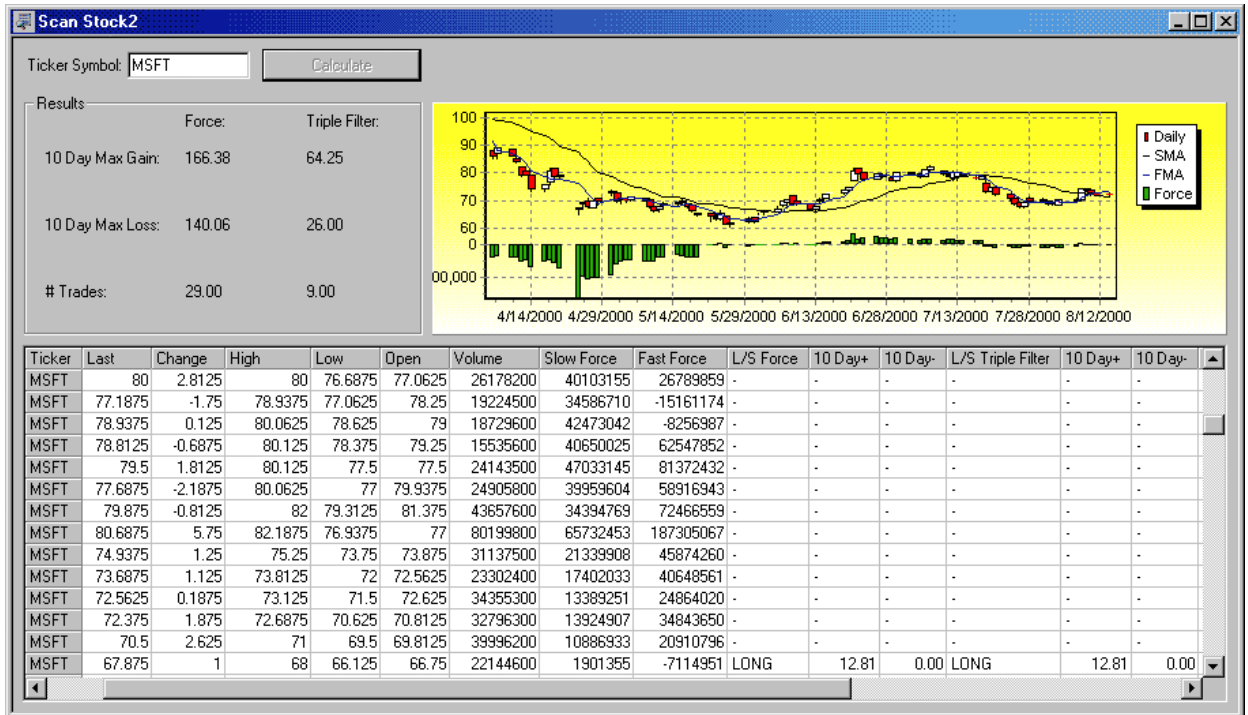
Scan Wizard's advertising partner, Conducent, Inc., is the first company to enable advertising and Internet functionality (chat, search, e-commerce buttons) in software. With the Conducent model, software developers are able to freely offer their products without having to place shareware limitations on them. "This innovative approach gives advertisers the opportunity to reach a captive audience in an environment that had been out of reach in the past," said Robert Regular, Conducent's Director of Marketing. "The benefit to consumers is the ability to get high quality products at an even more attractive and competitive price, possibly even free." More info at <http://www.conducent.com>.

#####

Screenshots: Scan Wizard firsts scan a ticker list for trend change:

| Ticker | Time | Last | Change | High | Low | Open | Volume | Slow Force | Fast Force | L/S Force | 10 Day+ | 10 Day- | L/S Triple Filter |
|--------|--------|-----------|---------|----------|---------|----------|----------|------------|------------|-----------|---------|---------|-------------------|
| EELN | 2:44PM | 3.625 | -0.25 | 3.84375 | 3.5 | 3.671875 | 18400 | -3187 | 10321 | SHORT | 0.00 | 0.00 | SHORT |
| RHAT | 2:50PM | 24.9375 | 3.125 | 25.1875 | 23.0625 | 24 | 8399900 | 2141757 | 11396904 | LONG | 0.00 | 0.00 | LONG |
| DCLK | 2:50PM | 32.625 | 0.875 | 33.5 | 31.75 | 32 | 1957500 | 445635 | -290395 | LONG | 0.00 | 0.00 | - |
| VRSN | 2:50PM | 158 | 11 | 158.25 | 146.625 | 147.4375 | 2800700 | 1394040 | 11027788 | LONG | 0.00 | 0.00 | - |
| AMZN | 2:50PM | 37.734375 | 2.8593 | 37.75 | 34.375 | 34.625 | 6142200 | -6376930 | 8890657 | - | - | - | - |
| AOL | 2:45PM | 54.5 | 1.5 | 54.5625 | 53.25 | 53.5 | 9696600 | -3088876 | 3559854 | - | - | - | - |
| ARBA | 2:50PM | 143.125 | 3.375 | 144.75 | 139.375 | 139.9375 | 3126000 | 13069294 | 3283738 | - | - | - | - |
| ATHM | 2:50PM | 14.0625 | 0.75 | 14.375 | 13.25 | 13.4375 | 2719900 | -1567441 | -78865 | - | - | - | - |
| BRCM | 2:50PM | 248.375 | 7.625 | 248.4375 | 240.375 | 240.625 | 2575900 | -1629419 | 6760676 | - | - | - | - |
| BVSN | 2:50PM | 30 | -1.1875 | 31.03125 | 29.625 | 31 | 5589300 | -5269615 | -4574362 | - | - | - | - |
| CDNW | 2:43PM | 2.9375 | 0.0312 | 2.96875 | 2.90625 | 2.90625 | 243900 | 2202 | 3012 | - | - | - | - |
| CHKP | 2:50PM | 123.5 | -0.4375 | 124.8125 | 121.75 | 124 | 1063000 | -275268 | -1592116 | - | - | - | - |
| CKFR | 2:49PM | 46.875 | 0.875 | 49 | 45.75 | 46.125 | 1101900 | -1284538 | -3551144 | - | - | - | - |
| CMGI | 2:50PM | 38.1875 | 0.4375 | 38.8125 | 36.875 | 37.6875 | 2383400 | -1912875 | -3024491 | - | - | - | - |
| CNET | 2:49PM | 27.625 | 0.625 | 27.875 | 26 | 26.5 | 710100 | -1182463 | -6812 | - | - | - | - |
| COMS | 2:50PM | 16 | -0.1875 | 16.375 | 15.8125 | 15.875 | 6908300 | -87216404 | -3969560 | - | - | - | - |
| CPTH | 2:50PM | 50.8125 | 3.8125 | 51.25 | 48.1875 | 48.375 | 936600 | -1868737 | -6239160 | - | - | - | - |
| CSCO | 2:50PM | 63.5 | -1 | 64.8125 | 62.9375 | 64.1875 | 25392900 | -2827395 | -8382398 | - | - | - | - |
| CYCH | 2:46PM | 4.4375 | 0.6875 | 4.625 | 3.6875 | 3.875 | 338500 | -10556 | 78431 | - | - | - | - |
| DRIV | 2:50PM | 5.5 | 0.125 | 5.53125 | 5.375 | 5.4375 | 103100 | -43154 | 5383 | - | - | - | - |
| EBAY | 2:50PM | 52.1875 | 4 | 52.1875 | 48 | 48.0625 | 2123200 | -782556 | 2332945 | - | - | - | - |
| EGGS | 2:39PM | 2.15625 | 0.0312 | 2.296875 | 2.15625 | 2.28125 | 207300 | 34463 | -6647 | - | - | - | - |
| EGRP | 2:50PM | 16.0625 | -0.25 | 16.8125 | 15.875 | 16.25 | 3628300 | -147611 | 1282651 | - | - | - | - |
| ELNK | 2:48PM | 9.75 | -0.25 | 10.03125 | 9.6875 | 9.96875 | 1296600 | -615490 | -361792 | - | - | - | - |
| EXDS | 2:50PM | 60 | 1.75 | 60.25 | 57.625 | 57.625 | 5601200 | 10322439 | 9998510 | - | - | - | - |

Then zeroes in on a particular stock:



Next, charts via candles, stochastics, Force Index



Finally, accesses the latest news to see what may be driving the change:

The screenshot shows a web browser window titled "NewsBrowser2". At the top, there is a "Ticker Symbol" field containing "mu" and a "Get News" button. Below this, the main content area is titled "Micron Technology Inc" with "NYSE:MU" on the right. There is a search bar with "Enter symbol:" and another "Get News" button, along with a link to "Stock Market Toolbar". A navigation menu includes links for "Quote", "Chart", "News", "Profile", "Research", "SEC", "Msgs", "Insider", and "Financials". The news feed is dated "Aug 15, 2000" and lists several articles with their sources and times. The list continues with "Aug 14, 2000" and "Aug 11, 2000" entries, showing a dense collection of financial news items.

NewsBrowser2

Ticker Symbol:

Micron Technology Inc NYSE:MU

Enter symbol: Get quotes, charts and research from any Web site with the [Stock Market Toolbar](#).

[symbol lookup](#)

More Info: [Quote](#) | [Chart](#) | [News](#) | [Profile](#) | [Research](#) | [SEC](#) | [Msgs](#) | [Insider](#) | [Financials](#)

(all times are Eastern)
Aug 15, 2000

- [\[external\] Chip stocks flex muscles ahead of H-P report - at CBS MarketWatch](#) - 1:40 pm
- [\[\\$\\$ - free trial\] A Semi-Sweet Market - at TheStreet.com](#) - 9:42 am

Aug 14, 2000

- [Dow Ends Up 148; Nasdaq Adds 60 - AP Business](#) - 6:56 pm
- [Stocks Surge, No Fed Rate Hike Seen - Reuters Business News](#) - 5:16 pm
- [U.S. stocks surge as Wall Street bets on no Fed rate hike - Reuters Securities](#) - 5:06 pm
- [\[external\] Chip stocks energized; Micron Tech, KLA-Tencor and Novellus standouts - at CBS MarketWatch](#) - 4:44 pm
- [Dow Ends Up 148; Nasdaq Adds 45 - AP Business](#) - 4:41 pm
- [Dow Ends Up 448; Nasdaq Adds 45 - AP Business](#) - 4:36 pm
- [Dow Gains 104; Nasdaq Adds 43 - AP Business](#) - 3:33 pm
- [Interest-Rate Hope Fuels Late Stock Rally - Reuters Business News](#) - 3:26 pm
- [U.S. stocks in afternoon rally in hopes for steady Fed - Reuters Securities](#) - 3:25 pm
- [\[\\$\\$ - free trial\] Mixing and Matching - at TheStreet.com](#) - 3:24 pm
- [\[external\] Chip charge fueled by Micron Technology - at CBS MarketWatch](#) - 1:15 pm
- [\[external\] SSB lifts Micron EPS est. - at CBS MarketWatch](#) - 1:03 pm
- [U.S. stocks inch up at midday - Reuters Securities](#) - 12:55 pm
- [HOT STOCKS HIGHLIGHTS - Aug. 14 - Reuters Securities](#) - 12:42 pm
- [Stocks Inch Up in Midday Trading - Reuters Business News](#) - 12:39 pm
- [\[external\] Chip stocks add 2.9 percent - at CBS MarketWatch](#) - 12:04 pm
- [RESEARCH ALERT-Salomon ups Micron earnings estimates - Reuters Securities](#) - 9:53 am

Aug 11, 2000

- [coverage initiated on Micron Tech by PaineWebber - Briefing.com](#) - 12:00 pm
- [\[external\] Micron target price raised, coverage started - at ZDNet](#) - 10:55 am
- [RESEARCH ALERT - Micron started, target upped - Reuters Securities](#) - 10:13 am

Aug 10, 2000